

Secondary Break Entry or Set Play Versus Man-to-Man

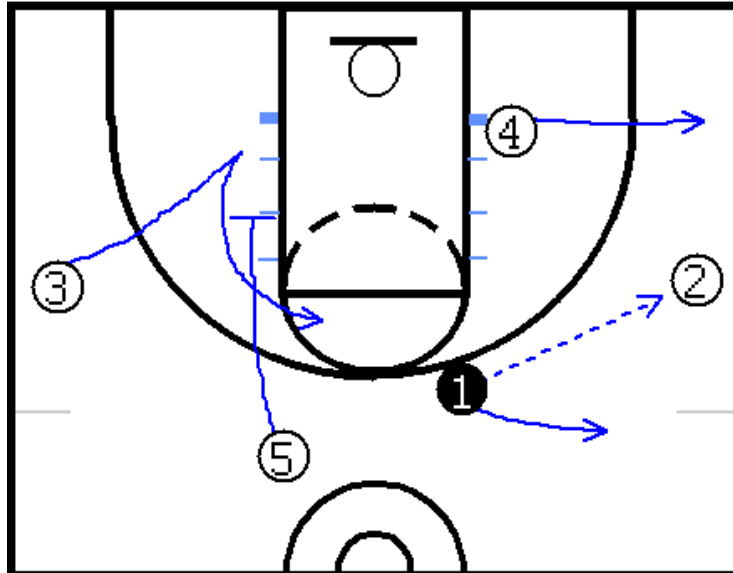


Diagram One

Diagram One depicts the initial alignment and entry pass. The set can be run to either side. As #1 advances the ball up the court, if the ball is forced to the other side of the court the two post players, #4 and #5 simply change sides of the court. #5 sets a down screen for #3 and #1 then passes to #2 on the right wing. #4 breaks to the ball side corner as #1 moves to create space.

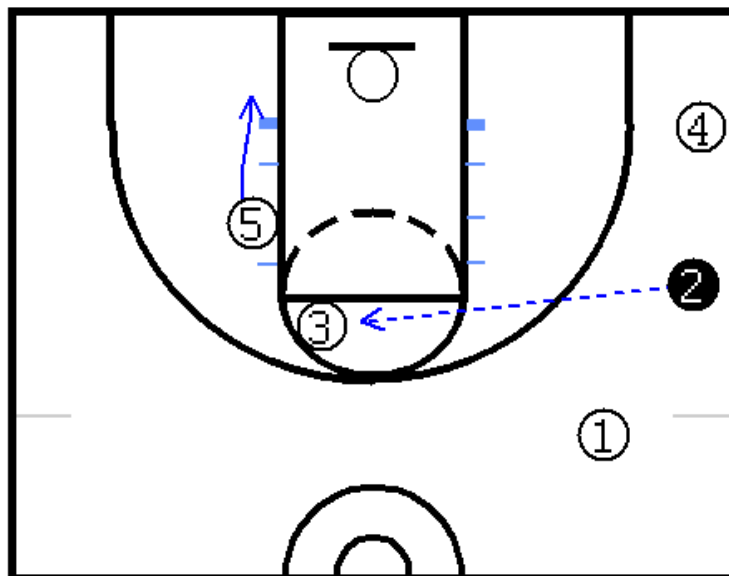


Diagram Two

In **Diagram Two** the ball is passed to #3 by #2 for a foul line jump shot. #5 cuts to the low post and sets up for a high low pass by sealing the defender out of the lane.

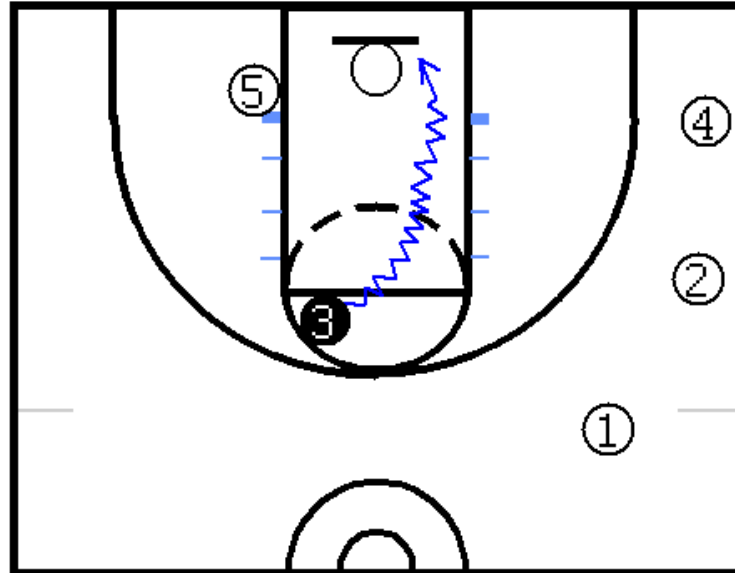


Diagram Three

Diagram Three depicts #3 driving the lane for a lay-up.

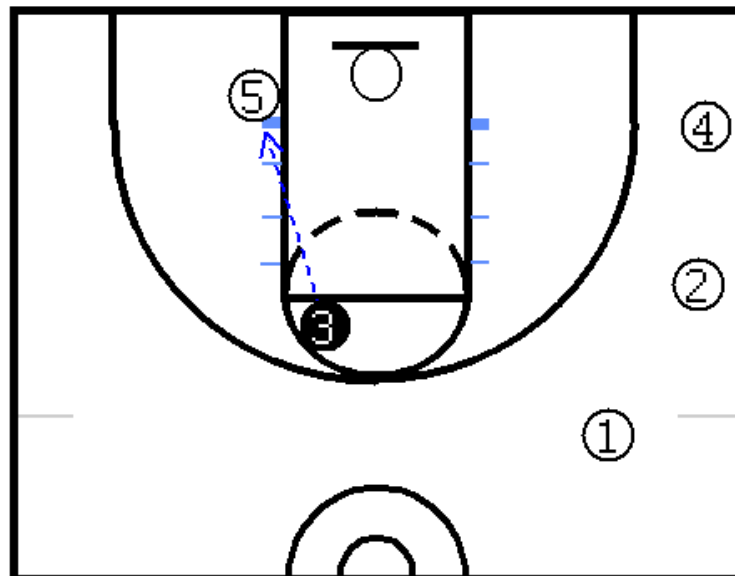


Diagram Four

Diagram Four depicts a high low pass from #3 to #5.

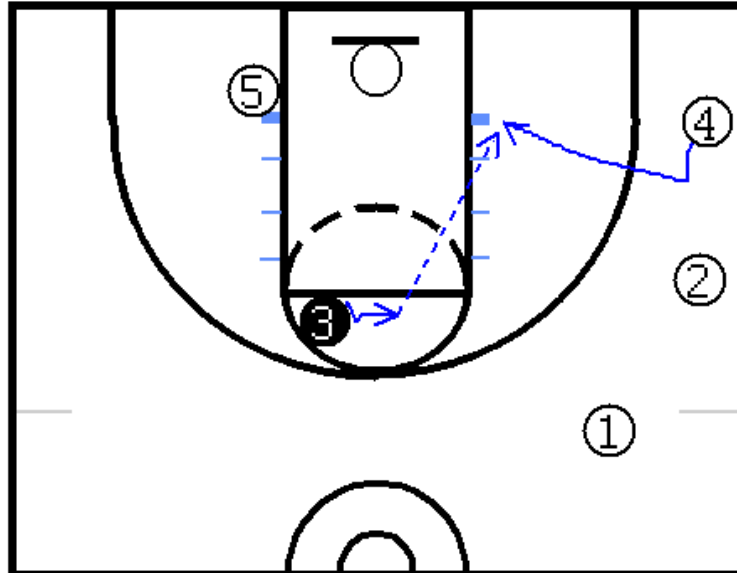


Diagram Five

In **Diagram Five** #4 executes a v-cut for a back door cut. #3 takes one dribble in the direction of #4 to improve the passing angle and passes the ball as close as possible down the lane line.

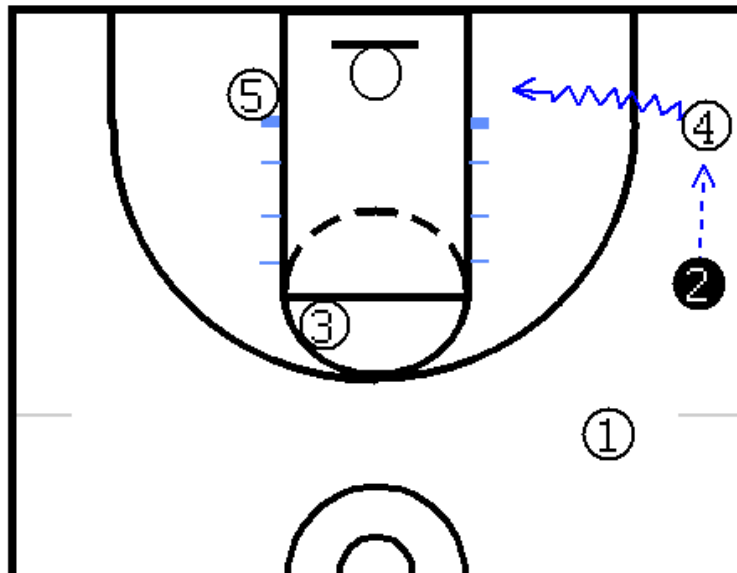


Diagram Six

Diagram Six depicts a different action. #2 passes to #4 in the ball side corner rather than pass to #3 cutting off #5's screen to the foul line area. #4 then drives baseline.

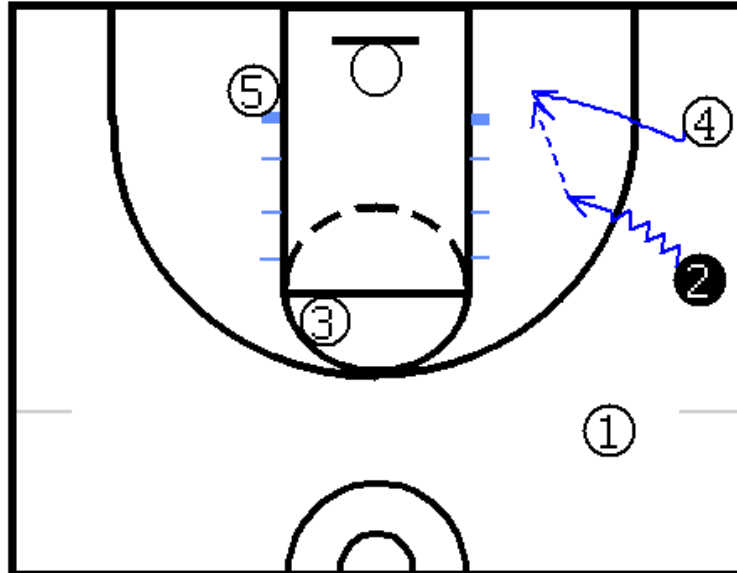


Diagram Seven

Diagram Seven depicts #2 driving and drawing the defender of #4. #4 takes advantage of the defender giving help by cutting to the goal for a pass from #2.

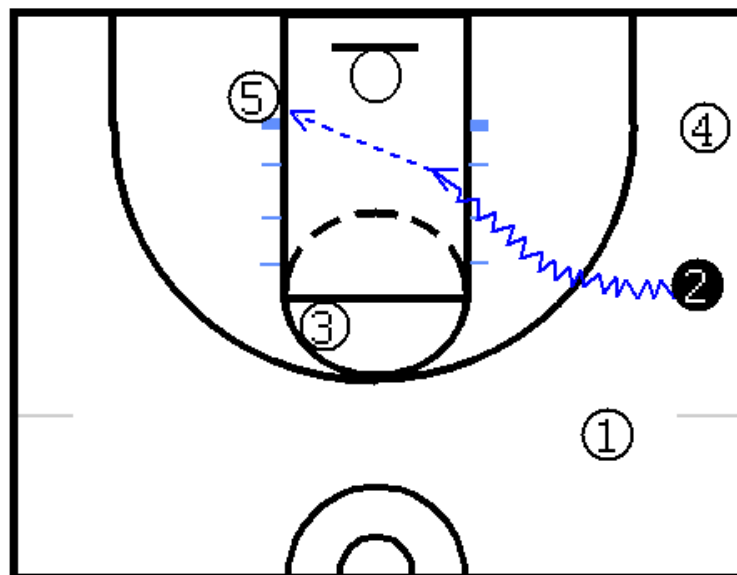


Diagram Eight

In **Diagram Eight** #2 is driving the middle and draws the defender of #5 creating a passing opportunity to #5 for a lay-up or power shot.

