

Zone Baseline Out Of Bounds for 3 Pt. Shooters

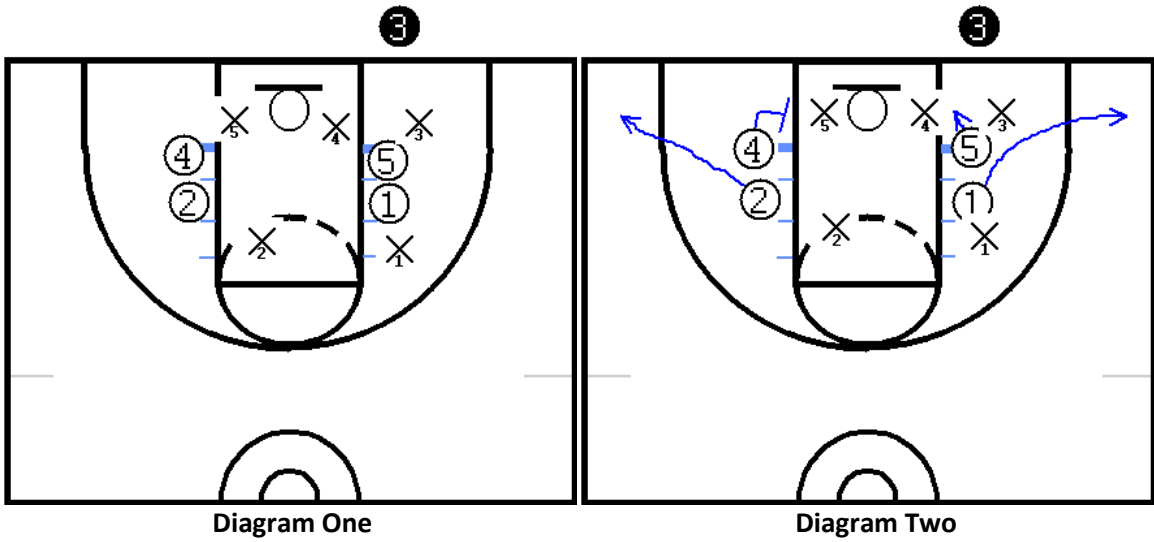


Diagram One depicts the basic alignment before the initial screen and cuts are made.

Diagram Two depicts the initial cuts and screen.

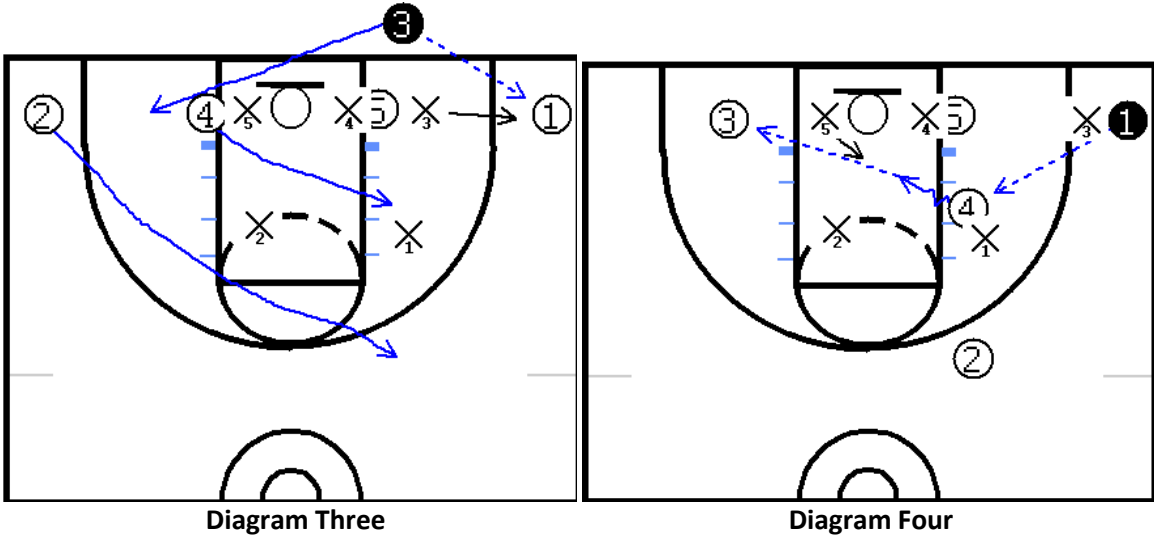


Diagram Three shows an inbound pass to #1. #4 flashes into the high post area while #2 cuts hard to the top of the key on the ball side. #3 times his/her cut to the weak side after making the inbound pass to #1

Diagram Four shows the entry pass to #4. If #4 does not have a shot, #4 should dribble once to draw X5, creating a shot for #3.

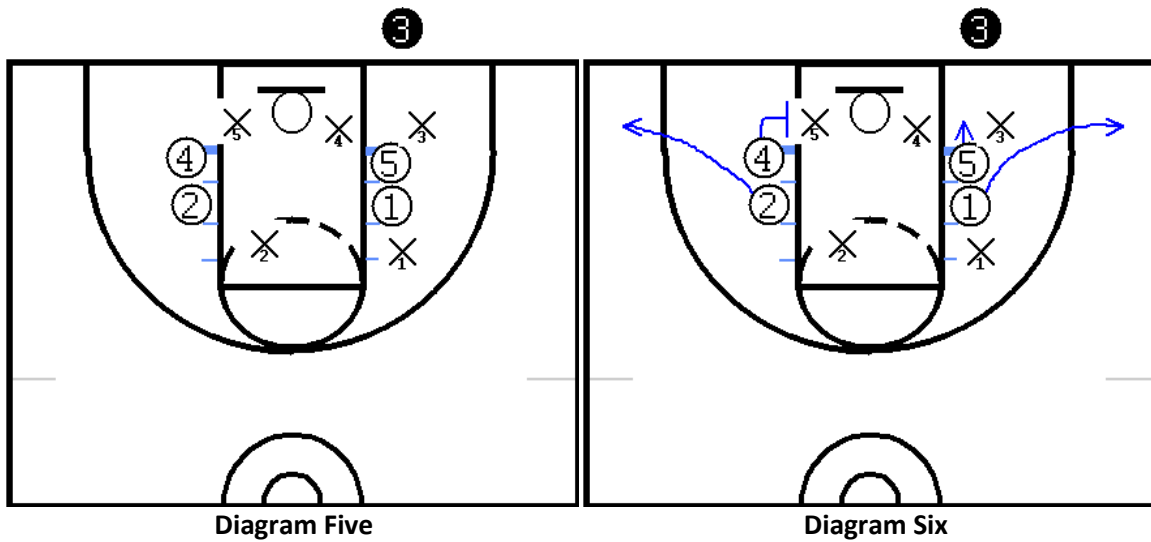
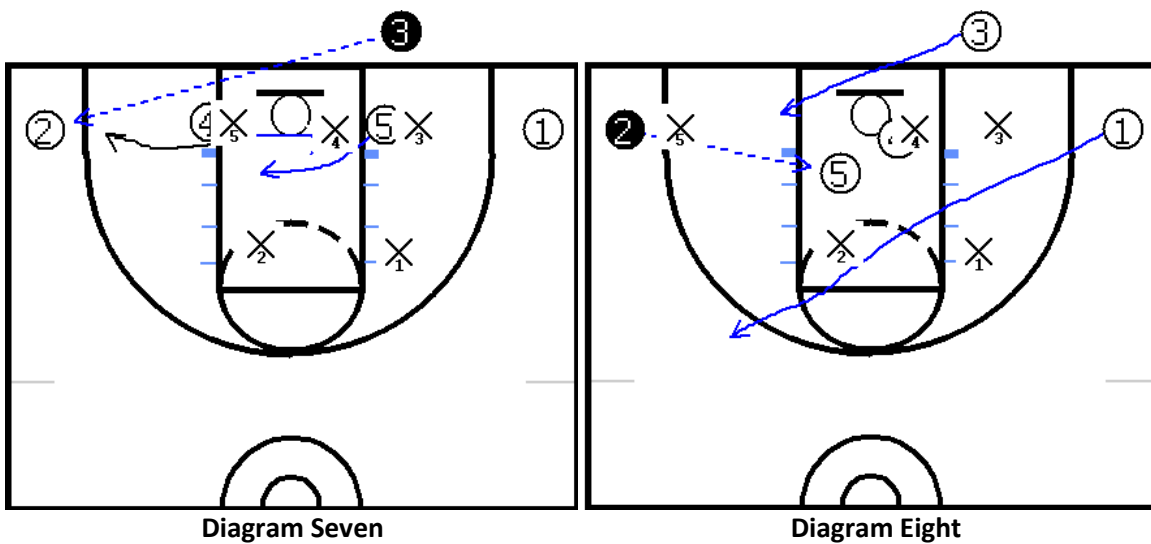


Diagram Five again depicts the initial alignment.

Diagram Six shows the initial cuts and screen



In Diagram Seven the ball is passed to #2. #4 screens in on X5. As X5 fights over the screen #4 releases and screens X4. #5 rolls into the open area in front of the rim.

In Diagram Eight if #2 does not have a 3 pt. shot attempt, the ball is entered to #5. #1 makes a hard cut on the pass to #2. #3 follows the inbound pass to #2. If #5 does not have a shot a pass is available to #3.

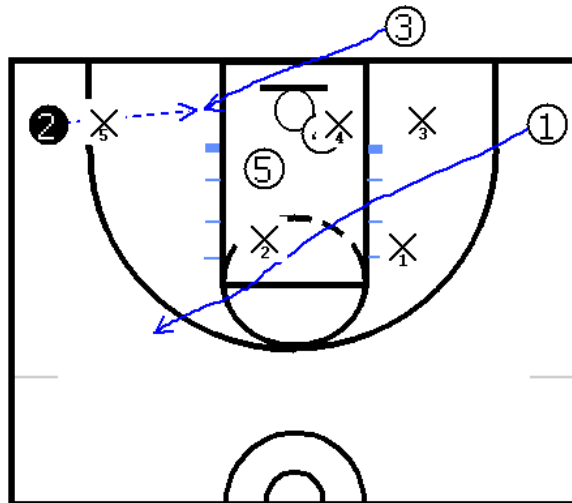


Diagram Nine

In **Diagram Nine**, #2 passes the ball to #3 following the inbounds pass. #3 can shoot or hit #5 for a shot if the defense is able to cover #3.



info@kcsbasketball.com
www.kcsbasketball.com